

This is your 2012 Board of Directors.
Please feel free to contact any of them with comments or questions.

President Hope Pickering – 382-3731
Past President Ray McQuiston – 382-3980
Vice President Jeff Fine – 382-3139
Treasurer Marcus Godsy – 303-2265

Lana Reynolds – 382-9218
Tom Newell – 382-0893
Steve Schoaps – 382-7254
Sandy Kiker - 382-1907
Doyle Long – 382-3079
Bob Berry – 382-3360

Natalie O’Dell – 382-2302
Dillon Robinson – 382-7653
Sharon Shaw – 382-0690
Roger Nansel – 382-4647
Rob Givens – 382-0731
Matt Webber – 382-1967

Ex-Officio Board Members

Jeff Pritchard – 382-5085
Steve Saxon – 382-4330
Dr. Jim Utterback – 382-9950
Executive Director – Amy Britt – 382-3640



Seminole Chamber of Commerce
Post Office Box 1190
Seminole, OK 74818-1190
Phone (405) 382-3640
Return Service Requested

PRSRT STD
U.S. POSTAGE
PAID
Permit No. 129

326 E. Evans ~ Post Office Box 1190 ~ Seminole, OK 74818-1190
Phone (405) 382-3640 ~ Fax (405) 382-3529
Visit us on the web at www.seminoleokchamber.org



SEMINOLE
CHAMBER
OF COMMERCE



IN ORDER FOR ANY CLUB, GROUP, OR
COMMUNITY TO BE SUCCESSFUL;
WHEN ASKED TO VOLUNTEER, YOU
HAVE TO MAKE TIME!
CECIL SULLIVAN

MANY HANDS MAKE THE LOAD LIGHT!
JOHN HEYWOOD



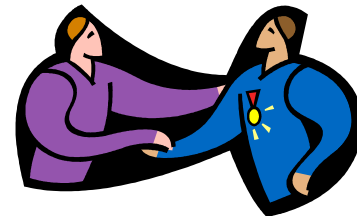
Thank you very much for another successful year! We have begun the Seminole Chamber of Commerce Membership Drive. We look forward to you joining us this year for many more great things to come. Please complete the application you received in the mail and return to the Chamber at your earliest convenience so there is no lapse in your benefits. If you need another copy to invite someone to join the Seminole Chamber, please let us know and we will ensure they get one. Have a spectacular 2012 and if there is anything we can do for you, feel free to contact us at any time.

We have started to solicit nominations for the David L. Boren Community Achievement Award to be presented at our Annual Seminole Chamber of Commerce Banquet on Thursday February 23, 2012. We have enclosed an application and look forward to all the great non-profits that are nominated. Please be sure to mark your calendars and attend the banquet to help celebrate with the winning group. Our current President Ray McQuiston with VF Jeanswear will be handing over the gavel to our new President Hope Pickering of TS&H Shirt Co. and we will announce the incoming board and thank the outgoing members. We will also make the much awaited announcement of Citizen of the Year for 2011. We will be mailing out invitations, but if you want to ensure a seat, call and reserve your tickets now. We are excited to announce that our prestigious speaker that evening will be Mr. Brad Carter. This will be an exciting evening looking back over 2011, looking forward to 2012, and awarding those that ensured the success of the Seminole Chamber of



Happy New Year from the Seminole Chamber of Commerce! We have included this year’s calendar of events so you can mark down all of the projects, events, and opportunities you’d like to be a part of in 2012. We are continuing to build the businesses that accept our newest benefit Chamber Bucks. If you are not currently participating, please let us know and we will get you the simple form so you too can benefit from the thousands of dollars that have already been generated in Seminole. If you are currently participating, please be sure that all of your employees are trained on how to accept them and your businesses way of returning any potential change. They are checks and should be processed as such and deposited with your daily revenues. Thank you again to those businesses that have already purchased and began to generate sales with Seminole Businesses. Contact us if you would like to purchase Chamber Bucks and we will get them ready ahead of time so you don’t have to wait.

CONGRATULATIONS TO THE FOLLOWING PEOPLE! YOU HAVE BEEN SELECTED TO PARTICIPATE IN THE 2012 LEADERSHIP SEMINOLE CLASS.



- Amy Hancock - BancFirst**
- Angela Church – Earlsboro Public Schools**
- Bob Perry - Gordon Cooper Technology Center**
- Dillon Robinson - Pam Robinson Real Estate**
- Jamie Dukes - Gateway to Prevention and Recovery**
- LaSumer Justus - City of Seminole**
- Laura Allison - Family Resource Center**
- Lonnell Alexander - Security State Bank**
- Margaret Scallorn - Tinker Federal Credit Union**
- Mike Grant - City of Seminole**
- Pam Robinson - Pam Robinson Real Estate**
- Peggy Mattheyer - VF Jeanswear/Wrangler**
- Rodney Sutterfield - Butch’s Custom Processing**
- Shelly Deatherage - Columbus Oil & Wallace Acid Frac**
- Susan Fulton - Tinker Federal Credit Union**
- Ted Prewitt - White’s Ace Hardware**
- Will Grant - Security State Bank**
- Amy Britt - Seminole Chamber of Commerce**
- Ray McQuiston - VF Jeanswear/Wrangler**

JANUARY FORUM
Thursday January 12, 2012 12:00 p.m.
Enoch Kelly Haney Center
Seminole State College
Our Program will be:
Jari Askins
Associate Provost for External Relations
University of Oklahoma Health Sciences Center
You may be the first person to read this so call the Chamber to see if you have won a prize. 405-382-3640

The public is welcome;
Cost of lunch is \$8.

Mark Your Calendars

- Banquet Thursday Feb. 23
- Made In Oklahoma Sat. April 7
- 4th of July Festival Wed. July 4
- Golf Tournament Fri. Sept. 28
- Friends of the Chamber Auction Thurs. Nov. 15
- Christmas Parade & Holiday Events Thurs. Dec. 13

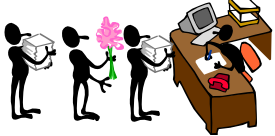
We would like to congratulate the following Chamber members who while reading our newsletter caught the phrase and won!

November Winners:
Shelly Deatherage
Sheri Griffin

December Winners:
Betty Smith
Lisa Schoaps



Be sure to read your newsletter and try to be the first to call in and claim your prize. Thank you to everyone who participated, but were not the first caller.



Thank you to everyone who participated in the Annual Christmas parade and holiday events. The dancers, the chocolate, the bazaar, the parade, and of course Santa; helped us all prepared for a Happy New Year! Thank you to OG&E for their sponsorship of this year’s parade! We appreciate your support.